

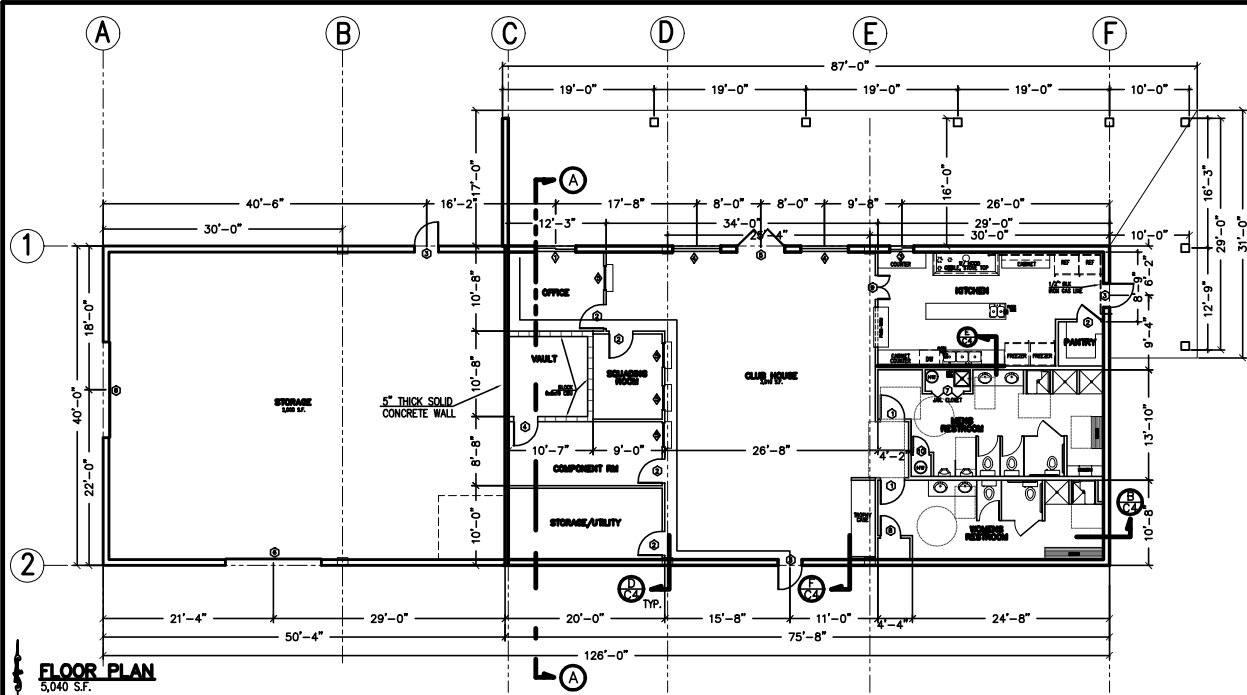
**GENERAL NOTES**

- GENERAL**
- All work shall be in strict compliance with the 2003 International Building Code, the 2004 Oregon Structural Specialty Code, and all other state and local regulations which may apply.
  - Design criteria:
    - Wind Load - 90 mph Exposure B
    - Seismic - Design Category - "D"
    - Seismic soil bearing pressure = 1500 psf.
    - Soil type - "D"
  - Roof Live Load = 25 psf per: Snow Load Analysis For Oregon, Rev. 3/79, Published by S.E.A.O. 6/71
  - Site location: 29753 HWY 20, BEND, OREGON
  - Owner: BEND TRAP CLUB; BILL GRAFTON, PRES. P.O. BOX 7774 BEND, OREGON 97708-7774
  - Occupancy class: A-3.5-1, B
  - Building type: VB
  - Earthquake design date: Refer to "Engineering Design Criteria" on
- SITE WORK**
- Subbase for slab, grade beams and footings shall be undisturbed natural ground or well compacted gravel material compacted to 95% of maximum dry density, ASTM D698. Provide compaction testing data.
  - Base material for the slab shall be a 4" layer of compacted 3/4" minus crushed rock, or approved equal compacted to 95% maximum dry density, ASTM D698.
  - Foot drains shall be directed away from building to outside at least 5' from the foundation. Site grading on all sides shall be away from the building.
  - Construct A.C. paving at all doorways with a grade change not to exceed 1/2".
- INSULATION**
- Vinyl backed insulation provided for the roof/ceiling assembly in the open portions of the building shall meet 2007 I.B.C. Section 1312.1.2. Flame spread rating < 25, smoke density < 450.
- ACCESSIBILITY**
- All facilities shall be made accessible in accordance to 2003 I.B.C. chapter 11
  - Curb ramps shall contrast visually with adjoining surfaces and have detectable warnings in accordance with Section 1108.7. Contact local building official for details.
  - Construct accessible counters with slope no higher than 3/4". Cover exposed drain pipes/hot water pipes with insulation or protective material.
  - No abrupt height change to floors shall exceed 1/4" without providing a ramp in accordance with Section 1108.4.5.
  - Provide accessibility signs in accordance with Section 1108.4.12
  - Doors with closers, shall be adjusted so that the sweep period takes at least 3 seconds to close from 70 degree open position to 3" from latch.
  - Sinks in lunch rooms shall have a MAX. depth of 6" and lever-type controls. Per OSSC 2004, 1108.11.3
- CONDUITS**
- Contractor to verify location of all conduits and plumbing locations prior to placement of concrete.
- MISC.**
- Provide egress lighting and exit illuminated exit signs in accordance with OSSC 1006.1 and 1011.1. Provide Braille (Braille) Exit sign @ each door, per OSSC 1011.3. (2011)
  - All windows to be double pane vinyl or aluminum frame and a "U" value not to exceed 0.50.
  - Provide outdoor ventilation air of 75 CFM/Bathroom.
  - All restroom facilities shall be finished with waterproof material in accordance with 2003 I.B.C. Section 1203.2.
  - Provide site address numbers a minimum of 8" tall on or adjacent to building according to I.F.C. Chapter 500.1
  - All exterior doors shall be operable from the inside without the use of a key or special knowledge or effort.
  - Provide special inspections of high strength bolting in accordance with 2003 I.B.C. Chapter 17.
  - Interior improvements will be submitted to the City of Bend, Building Department at time of issue.
  - NOT USED
  - Provide 6" min. base material in restrooms, per Section 1210.1
  - Sealry gasketing required in all locations with-in 24" of doors on either side per OSSC 2406.3
  - Door hardware shall be mounted 34" to 48" A.F.F. per OSSC 2004, 1008.1.8 & 1009.9.8

WOOD SCHEDULE			
NO.	QTY.	SIZE	DESCRIPTION
1	2	3-0 x 7-0	WOOD INTERIOR
2	3	3-0 x 7-0	WOOD INTERIOR
3	3	3-0 x 7-0	METAL EXTERIOR
4	1	3-0 x 6-8	METAL EXTERIOR
5	1	3-0 x 7-0	METAL EXTERIOR
6	2	12 x 12	METAL HILL UP DOORS
7	1	4-0 x 8-4	WOODEN IN-FIELD
8	1	2-4 x 6-8	WOOD INTERIOR
9	1	2-4 x 6-8	WOOD INTERIOR
10	1	2-0 x 6-8	WOOD INTERIOR
11	1	2-0 x 6-8	WOOD INTERIOR

HARDWARE			
NO.	QTY.	SIZE	DESCRIPTION
1	2	3-0 x 7-0	CLOSURES & LOCKS
2	3	3-0 x 7-0	LEVERS & LOCKS
3	3	3-0 x 7-0	CLOSURES/LOCKS
4	1	3-0 x 6-8	LEVERS & LOCKS
5	1	3-0 x 7-0	CLOSURES & LOCKS/PUSH BAR
6	2	12 x 12	INSULATED
7	1	4-0 x 8-4	INSULATED ALUM./WVYL.
8	1	2-4 x 6-8	INSULATED ALUM./WVYL.
9	1	2-4 x 6-8	INSULATED ALUM./WVYL.
10	1	2-0 x 6-8	STEEL ROLL UP SHUTTER



**FLOOR PLAN**  
5,040 SF.

**CODE ANALYSIS**  
PER 2003 IBC/2004 OSSC  
UNLESS NOTED OTHERWISE

**OCCUPANCY BY CLASS**

Office (B) Occupancy = 710 SF  
Restrooms/Kitchen Accessory to Event Center = 1,130 SF  
Club House (A-2) Occupancy = 1,170 SF  
Storage Building (S-1) Occupancy = 2,000 SF

**BUILDING AREA**  
TYPE: VB CONSTRUCTION  
OCCUPANCY: B, S-1, A-2  
NON-SEPARATED USE(OSSC 302.3.1)-MOST RESTRICTIVE RATING = A  
DESIGN OCCUPANCY:  
BUILDING DESIGN AREA = 5,010 SF  
TABLE 503, MOST RESTRICTIVE = A  
ALLOWABLE AREA = 8,000 SF  
ALLOWABLE STORES = 1  
8,000 SF > 5,010 SF (DESIGN AREA).....OK

**OCCUPANT CALC** (TABLE 1004-1.2)  
OFFICE AREA @ (1/100 #) = ACTUAL AREA 710 SF = 8 OCC.  
CLUB HOUSE @ (1/15 #) = ACTUAL AREA 1,170 SF = 78 OCC.  
STORAGE BUILDING @ (1/500 #) = ACTUAL AREA 2000 SF = 4 OCC.  
TOTAL OCCUPANTS = 90 OCC.

**VENTILATION**  
A-2, B, OCC:  
48 x 3,010 SF = 120SF (OSSC 1203.4.1)  
(SEE MECHANICAL PLANS)  
S1 OCC:  
48 x 2,000 SF = 800 SF (OSSC 1203.4.1)  
PROVIDED VENTILATION: OVERHEAD DOOR = 288 SF (> 70 SF.F) .....OK

**FIRE & LIFE SAFETY ANALYSIS**

**RESTROOM FACILITIES**  
[2007 IBC TABLE A-29-A]  
S-1 Occupancy = 2,000/5000 = 1 OCC  
B Occupancy = 710/200 = 4 OCC  
A-2 Occupancy = 1,170/30 = 39 OCC  
TOTAL OCC. = 44

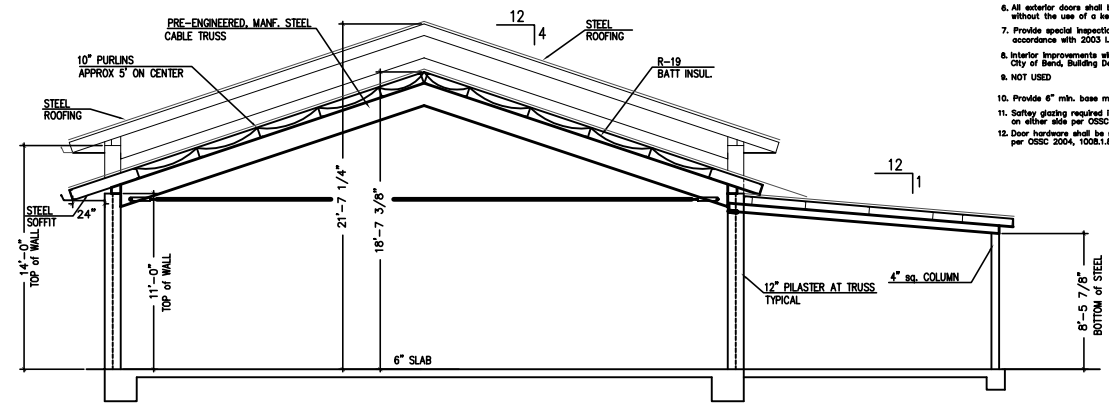
**EXIT REQUIREMENTS**  
ASSEMBLY: DIAGONAL LENGTH = 21'  
MIN. DOOR SEPARATION = 117/3 = 22'  
PROVIDED SEPARATION = 56'  
(OSSC 1014.2.1 EXC. 2)  
OFFICE: ONE EXIT REQUIRED (TABLE 1014.1)  
COMMON PATH OF EGRESS TRAVEL = 72'  
(OSSC 1014.2.1 EXC. 2)

**EXIT ACCESS TRAVEL DISTANCE**  
TABLE 1015.1.....MAX LENGTH = 75 FT  
MAXIMUM EXIT LENGTH = 72 FT

**REQUIRED:**  
WATER CLOSETS: M = 2  
F = 2  
LAVATORIES: M = 2  
F = 2

**PROVIDED:**  
WATER CLOSETS: M = 3, F = 2  
URINALS: M = 2  
LAVATORIES: M = 2, F = 2

REQ'D: (1) DRINKING FOUNTAIN  
(TABLE 2002.1 (4)) (3) FOUNTAINS  
REQ'D: @ OCC. > 30 OCC.  
UNLESS BOTTLED WATER COOLER PROVIDED.



**SECTION A-A**  
SCALE: 1/4"=1'-0"