

# BTC 2011 Annual Membership Meeting



# Meeting Agenda

- Review Non Profit / Private Club
- Club Status
  - Club Reports
  - Bylaws
  - Financial Balance
- Annual Elections
  - Open Board Positions
- Open Forum
- Adjournment / March Annual Board Meeting
  - Election of 2011 Board Officers

# Review Non Profit / Private Club

- Development Conditions
- Site Plan
- Zoning
- Construction

# Millican Site

## MODIFICATION OF APPROVAL FOR SITE PLAN SP-XX-XX

TOWNSHIP 20 SOUTH, RANGE 16 EAST  
SECTION 5, DESCHUTES COUNTY, OREGON

**OWNER/APPLICANT:**  
BEND TRAP CLUB  
BILL GRAFTON, PRESIDENT  
PO BOX 7444  
BEND, OR 97708  
(541) 383-1468

**ENGINEER:**  
HICKMAN WILLIAMS & ASSOCIATES  
MATT STEELE, PE  
1201 NW WALL STREET, SUITE 100  
BEND, OR 97701  
(541) 388-9351

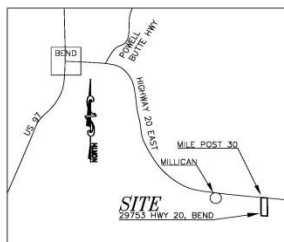
TAX LOT	AREA	ZONE
201600 00-01204	X	X
201600 00-01208	X	X
201600 00-01212	X	X
201600 00-01213	X	X

**WATER SUPPLY:** WELL  
**SEWAGE DISPOSAL:** SEPTIC  
**ELECTRIC SERVICE:** CENTRAL ELECTRIC COOP  
**TELEPHONE SERVICE:** COMST  
**SCHOOL DISTRICT:** BEND-LA PINE  
**FIRE PROTECTION:** DESCHUTES COUNTY RURAL FIRE PROTECTION  
**IRRIGATION DISTRICT:** NONE  
**PROPOSED AREA OF USE:** APPROX 60 ACRES  
**REQUIRED LANDSCAPE:** ~9 AC (15%)  
**PROPOSED NATURAL EXIST. LANDSCAPE:** 46.8 AC. (78%)  
**PROPOSED DEVELOPED LANDSCAPE:** 4.4 AC. (7%)  
**TOTAL LANDSCAPE:** 51.2 AC. (85%)

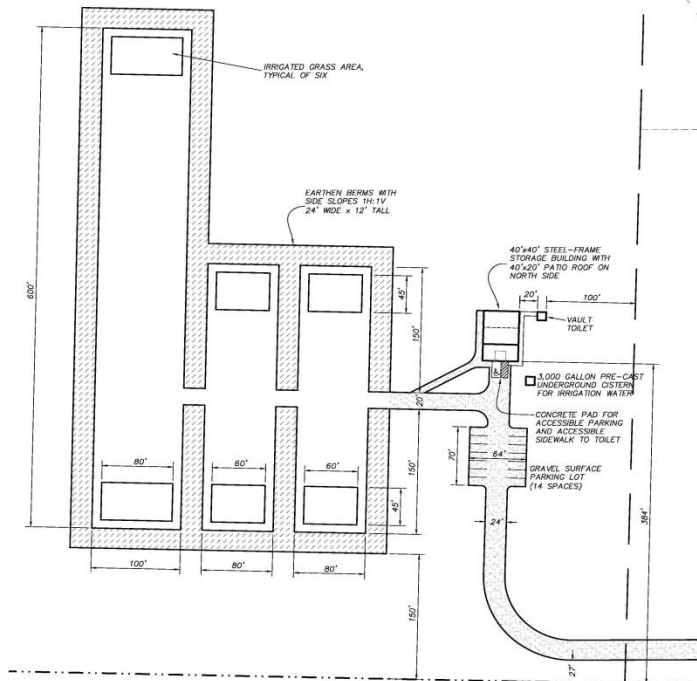
**REQUIRED PARKING:**  
TYPE # ATTENDING ORGANIZED SHOOTING EVENT  
ON A WEEKEND=75 MEMBERS/GUESTS  
1.5 PEOPLE PER CAR= 50 SPACES

**PROPOSED PARKING:** XX SPACES  
INCLUDES XX HANDICAP/VAN SPACE

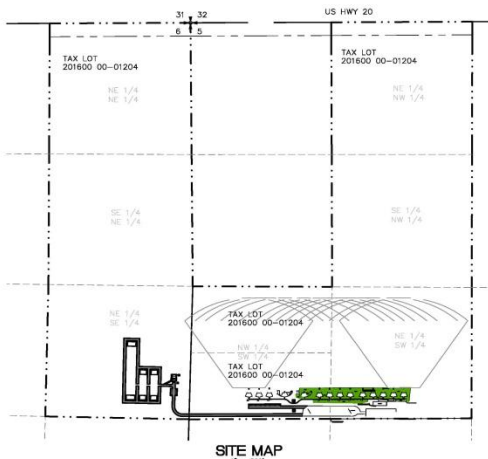
**BUILDING AREA:**  
**BUILDING HEIGHT:**  
**BUILDING TYPE:** V-B  
**BUILDING OCCUPANCY:** B  
**BUILDING IS NOT SPRINKLERED**



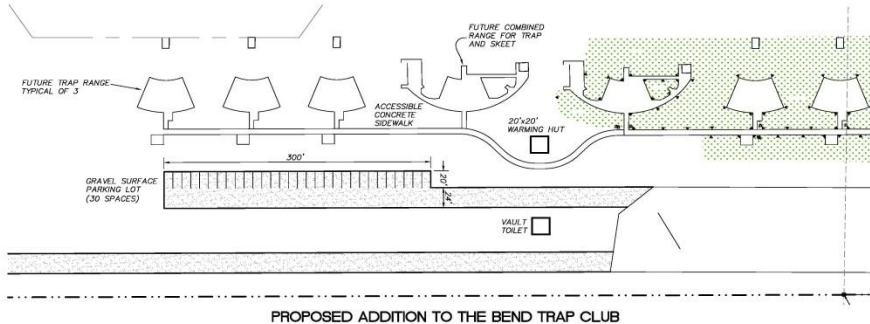
VICINITY MAP  
NOT TO SCALE



PROPOSED TRAINING RANGE FOR THE  
DESCHUTES COUNTY SHERIFF DEPARTMENT  
1" = 80'



SITE MAP  
1" = 200'



PROPOSED ADDITION TO THE BEND TRAP CLUB  
1" = 80'

DESIGNED BY: HICKMAN WILLIAMS & ASSOCIATES  
DRAWN BY: MATT STEELE  
CHECKED BY: MATT STEELE  
SCALE: AS SHOWN  
FILE: 090702-Site Plan  
DATE: 10/17/09  
SHEET: 1/1  
HWA # 090702-B

**BEND TRAP CLUB**  
MODIFICATION OF APPROVAL  
SITE PLAN SP-XX-XX  
DESCHUTES COUNTY, OREGON

**HWA** SURVEYOR, ENGINEERS & PLANNERS  
HICKMAN WILLIAMS & ASSOCIATES, INC.  
1201 NW WALL STREET, SUITE 100  
BEND, OREGON 97701  
PHONE: 541.388.9351 FAX: 541.388.6411  
WWW.HWA-INC.COM

DESIGNED BY: HWA  
DRAWN BY: MSTE  
CHECKED BY: MSTE  
SCALE: AS SHOWN  
FILE: 090702-Site Plan  
DATE: 10/17/09  
SHEET: 1/1

HWA # 090702-B

Credit: S:\Work\Projects\090702\_Site Plan\Drawings\090702-Site Plan.dwg, Wed, Oct 07, 2009, 2:17pm

# Club Status Reports

- Financial Balance
- Bylaws
- Sheriff Department
- Millican Site
- Scheduled Shoots

# Treasurer's Report- 2011

- Checking Account  
\$12,065
- Target Account  
\$2,974
- Reserve Fund  
\$22,274
- Equipment Fund  
\$ 3,914

# 2011 Assets, Liabilities, Equities

9:13 AM  
03/09/11  
Cash Basis

**Bend Trap Club**  
**Balance Sheet**  
As of March 9, 2011  
Mar 9, 11

**ASSETS**

Current Assets

Checking/Savings

Bank of America 41,227.61

**Total Checking/Savings** 41,227.61

Other Current Assets

Petty Cash 100.00

**Total Other Current Assets** 100.00

**Total Current Assets** 41,327.61

Fixed Assets

Land Buildings and Equipment 2,729,452.80

Notes receivable- Madras 4,000.00

**Total Fixed Assets** 2,733,452.80

**TOTAL ASSETS** 2,774,780.41

**LIABILITIES & EQUITY**

Equity

Opening Balance Equity 2,743,973.86

Retained Earnings 15,417.55

Net Income 15,389.00

**Total Equity** 2,774,780.41

**TOTAL LIABILITIES & EQUITY** 2,774,780.41

# 2010 Profit and Loss

8:30 AM  
03/08/11  
Cash Basis

**Bend Trap Club**  
**Profit & Loss**  
January through December 2010

	<u>Jan - Dec 10</u>
<b>Ordinary Income/Expense</b>	
Income	
Adjustment	0.00
All Dues	2,519.00
Card Deposit	729.00
Card Targets	26,204.85
Case Targets	6,678.90
Club Events	25,372.26
Components	18,576.50
Food	276.00
Interest/Dividend Income	311.44
Member Donations	5,449.00
Misc Income	1,459.80
Over/Short	931.67
R.V. Space Revenue	969.02
<b>Total Income</b>	<u>89,477.44</u>
<b>Gross Profit</b>	89,477.44
Expense	
Advertising and Promotion	111.43
Bank Service Charge	55.00
Component Purchase Expense	15,314.60
Donations	400.00
Dues and Subscriptions	155.00
Insurance Expense	3,927.50
Office Supplies	479.12
Postage and Delivery	44.00
Printing & Mailing Services	277.42
Professional Fees	785.00
Repairs and Maintenance	1,135.38
Shoot Expense	20,068.53
Targets	22,239.27
Taxes - Property	3,344.33
Utilities	5,723.31
<b>Total Expense</b>	<u>74,059.89</u>
<b>Net Ordinary Income</b>	<u>15,417.55</u>
<b>Net Income</b>	<u><u>15,417.55</u></u>

# Shoot Profit Analysis

## CLUB EVENTS REVENUE SUMMARY

- Revenue:  $\$25,372 - \$5,500 \text{ (ATA)} = \$19,872$
- Shoot Expense  $\$20,068$
- Net  $\$19,872 - \$20,068 = \$192 \text{ LOSS}$  for 2010 in
- Includes  $\$1,300$  donated cashiering fees, so  
    “ we were not out of pocket”
- All other shoot profits did not put us in the black.
- 51 shooters at Memorial Day, 20 at August shoot

# Memorial Day Targets Thrown

2000--- 82,100 = avg. 102 shooters/event

- 2005--- 63,000 = avg. 79 shooters/event

- 2008--- 56,000 = avg. 70 shooters/event

- 2009--- 40,900 = avg. 51 shooters/event

- 2010--- 39,800 = avg. 49.75 shooters/event

# 2011 Budgeted Profit and Loss

3:37 PM  
03/08/11  
Cash Basis

**Bend Trap Club**  
**Profit & Loss Budget Overview**  
January through December 2011

	<u>Jan - Dec 11</u>
<b>Ordinary Income/Expense</b>	
<b>Income</b>	
All Dues	10,250.00
Card Deposit	450.00
Card Targets	25,635.00
Case Targets	6,600.00
Club Events	9,200.00
Components	12,750.00
Food	360.00
Interest/Dividend Income	0.00
Member Donations	0.00
Misc Income	0.00
Over/Short	420.00
R.V. Space Revenue	0.00
<b>Total Income</b>	<u>65,675.00</u>
 <b>Gross Profit</b>	 65,675.00
 <b>Expense</b>	
Advertising and Promotion	400.00
Caretaker Expense	1,800.00
Charitable Contributions	200.00
Component Purchase Expense	11,600.00
Computer and Internet Expense	240.00
Dues and Subscriptions	160.00
Insurance Expense	4,100.00
Office Supplies	250.00
Postage and Delivery	200.00
Professional Fees	1,000.00
Repairs and Maintenance	6,520.00
Shoot Expense	3,080.00
Targets	23,250.00
Taxes - Property	3,500.00
Utilities	6,100.00
<b>Total Expense</b>	<u>62,400.00</u>
 <b>Net Ordinary Income</b>	 <u>3,275.00</u>
 <b>Net Income</b>	 <u>3,275.00</u>

# 2011 P/L Budget/Actual

9:04 AM  
03/11/11  
Cash Basis

**Bend Trap Club**  
**Profit & Loss Budget vs. Actual**  
January 1 through March 11, 2011

	<u>Jan 1 - Mar 11, 11</u>	<u>Budget</u>	<u>\$ Over Budget</u>
<b>Ordinary Income/Expense</b>			
<b>Income</b>			
All Dues	11,099.33	8,854.84	2,244.49
Card Deposit	180.00	117.74	62.26
Card Targets	4,539.16	3,867.58	671.58
Case Targets	114.00	461.29	-347.29
Club Events	351.00	0.00	351.00
Components	2,235.00	1,779.03	455.97
<b>Total Income</b>	<b>18,619.45</b>	<b>15,233.55</b>	<b>3,385.90</b>
<b>Gross Profit</b>	<b>18,619.45</b>	<b>15,233.55</b>	<b>3,385.90</b>
<b>Expense</b>			
Advertising and Promotion	205.25	0.00	205.25
Computer and Internet Expenses	379.40	47.10	332.30
Office Supplies	572.00	78.23	493.77
Postage and Delivery	44.00	167.74	-123.74
Professional Fees	150.00	380.65	-230.65
Repairs and Maintenance	125.28	141.29	-16.01
Shoot Expense	207.00	87.10	119.90
Utilities	1,027.52	1,327.42	-299.90
<b>Total Expense</b>	<b>3,230.45</b>	<b>4,911.79</b>	<b>-1,681.34</b>
<b>Net Ordinary Income</b>	<b>15,389.00</b>	<b>10,321.76</b>	<b>5,067.24</b>
<b>Net Income</b>	<b>15,389.00</b>	<b>10,321.76</b>	<b>5,067.24</b>

# Secretary's Report

- Membership Date of Record: 3/7/2011
  - 131 Total (paid) members
    - 62 General
    - 6 Probationary-General
    - 8 Life
    - 54 Associate

## **Upgrades**

15 Gold Level

7 Platinum Level

# Club By Law Changes

- There were no By Law Changes this year.

# Sheriff Department

## Sheriff's Lease

- All buildings and irrigation are complete
- Sherriff has exclusive use. We own it.
- Respect their exclusive use.
- Very important that we NOT observe their training techniques.

# Completed Development

- 5 Stand / Skeet Combo
- All weather
- Card key controlled
- Elevated stands
- Skeet Overlay
- Revenue Source

# What is 5 Stand?

- Hunting Oriented Targets
- Several Sport Variations
- 25 targets per round
- Multiple skill levels
- Typically use 8 or more traps
- Tower, Qtrs(2), Inbound, Rabbits, Teal, Crossing (2)

# All Weather 5-Stand



# Card Payment System

- Credit card payment style
- Allows management of shooting rates
- Issued to Members Only  
( \$15 refundable deposit )
- Helps manage non member activity  
( Card Blocking )

# Scheduled Shoot Activities

- Adults w/Disabilities May 20
- High Desert Skeet Challenge - June 17-20
- ATA 2011 State Shoot June 30- July 3<sup>rd</sup>
- NSSA/NSCA -- Crossfire 12 ga
- July 23-24
- Aug 27-8
- Sept 24-25
- ATA 2012 State Shoot Sept 15-18
- Turkey shoots,- Sat – Nov 19 & Dec 17

# Annual Director Elections (Nominations)

- Terms to March 2014
  - Marc Rich
  - Lloyd Brooks
  - Dave Jewell
  - Terry Colombo

# Open Forum

- Questions
- Issues
- Direction
- Announcements

# Adjournment

- March Director Annual Meeting
  - Election of 2011 Officers